

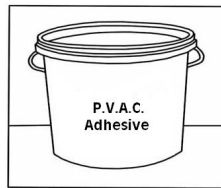
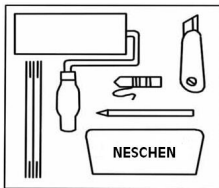
application tips - solvoprint wallpaper / ... NW

The wall should be solid and dry. Completely remove any existing wallpaper, old peeling paint and any traces of ink or crayon. If applying to a new or porous surface first seal the wall with a primer coat.

We advise an dispersion adhesive on PVAC base (for example Henkel Ovalit T).

tools:

- Lambs wool adhesive roller
- Measuring device
- Razor knife
- Plumb line
- Pencil
- Wallpaper spatula
- Soft sponge or cloth
- Seaming roller and wallpaper brush can also be used as an option.



Pre-cut the wallpaper into the proper number of strips adding 5 cm extra. Using the plumb mark a perpendicular line that will allow the first piece to pass a corner by about 2 cm. (fig. 1)

Coat the wall with adhesive. It is not needfully to coat the wallpaper with adhesive.

Overlap the following peice by 4 cm and smooth out again in a verticle direction with the spatula.

Use the razor knife and a long metal straight edge to cut down through the center of the seam. Be careful not to cut into the wall. A deep cut into the wall can result in the seams seperating. (fig. 2)

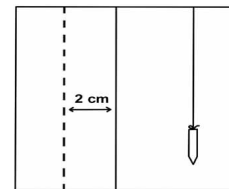


fig.1

Peel back the edges and remove the excess inner and outer strips and re-paste the seam together with the spatula. A seaming roller can also be used to lightly press the edges together. (fig.3)

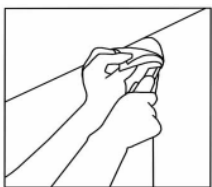


fig. 2

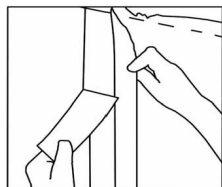


fig. 3

With the spatula laying against the wallpaper use as a straight edge to trim the top and bottom excess. Keep the knife and spatula moving together when trimming. Use a damp sponge or cloth to remove the excess adhesive from the wallpaper before it dries.

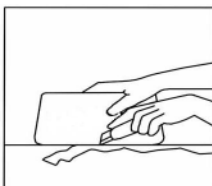


fig. 4



fig.5

